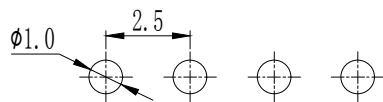
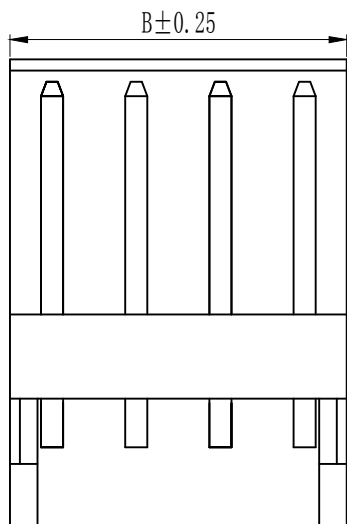
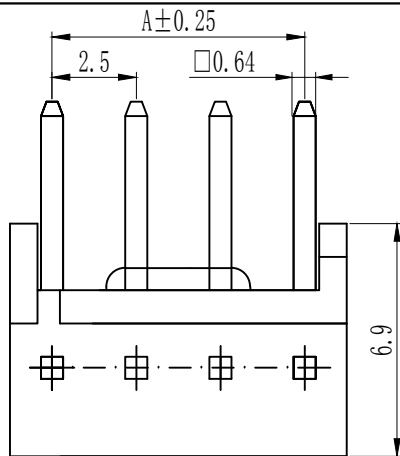
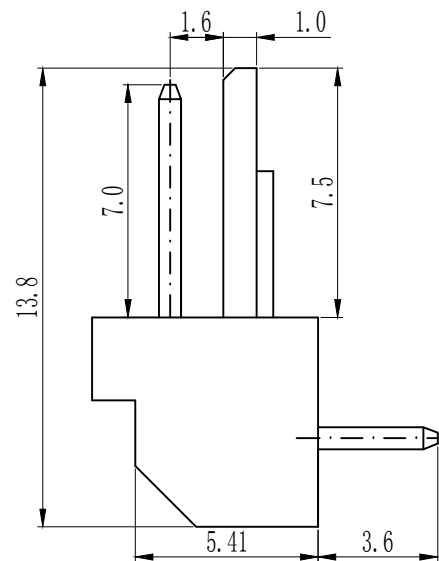


Pin数	尺寸A	尺寸B
2	2.50	5.00
3	5.00	7.50
4	7.50	10.00
5	10.00	12.50
6	12.50	15.00
7	15.00	17.50
8	17.50	20.00
9	20.00	22.50
10	22.50	25.00
11	25.00	27.50
12	27.50	30.00



P.C.B LAYOUT



技术参数 SPECIFICATIONS

- ◆间距: 2.5 Pitch: 2.5
- ◆适用线规: AWG#22-#28  
Applicable Wire: AWG#22-#28
- ◆额定电压: AC, DC, 250V (有效值)  
Voltage rating: AC, DC, 250V (rms)
- ◆额定电流: 2.5A, AC, DC (AWG#22)  
Current rating: 2.5A, AC, DC (AWG#22)
- ◆耐压值: 800V AC/minute  
Withstand voltage: 800V AC/minute
- ◆工作温度:  $-25^{\circ}\text{C} \sim +85^{\circ}\text{C}$   
Working Temp:  $-25^{\circ}\text{C} \sim +85^{\circ}\text{C}$
- ◆绝缘电阻:  $\geq 1000\text{M}\Omega$   
Insulation resistance:  $\geq 1000\text{M}\Omega$
- ◆接触电阻:  $\leq 10\text{m}\Omega$   
Contact resistance:  $\leq 10\text{m}\Omega$

材料 MATERIAL

- ◆绝缘体: 尼龙66, UL94-V0  
Insulator: Nylon66 UL94-V0
- ◆接触针: 黄铜  
Contact PIN: Brass

TOLERANCE:

X.  $\pm XXX$

.X  $\pm 0.20$

.XX  $\pm 0.10$

ANG.



上海狮拓电子科技有限公司

产品名称:

产品料号:

THIRD ANGLE PROJECTION



签名

日期

审核

日期

客户确认

承认 \_\_\_\_\_ 日期 \_\_\_\_\_

驳回 \_\_\_\_\_ 日期 \_\_\_\_\_

JVC-4ADW